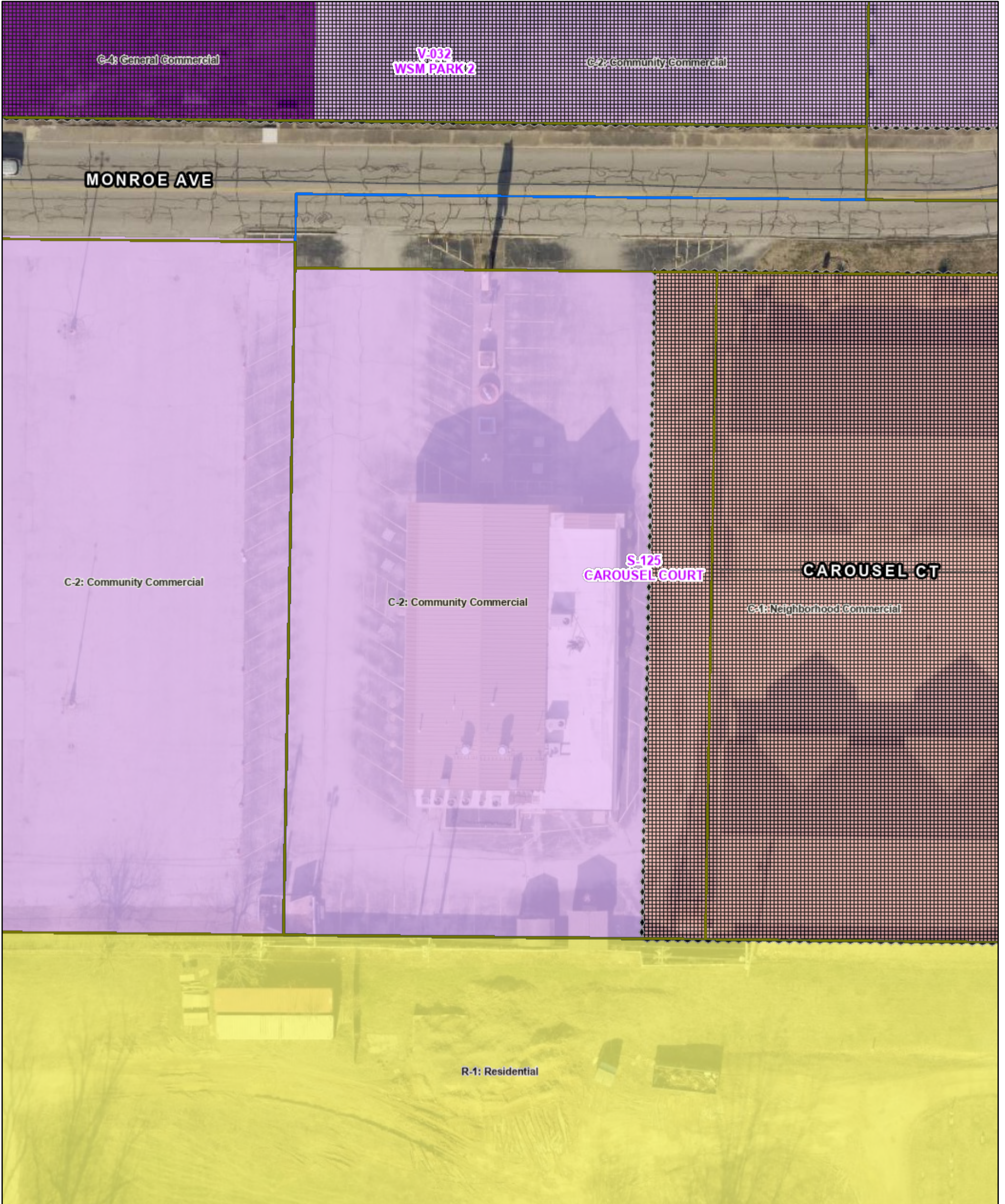
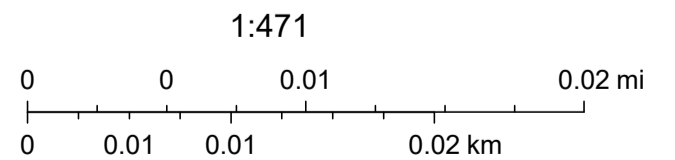


Area Plan Commission Zoning Map



3/27/2026, 11:25:40 AM

- | | | |
|---------------------------|--------------------------------------|------------------------------|
| Parcels | Evansville City Limits | C-2: Community Commercial |
| Errata Data | Sidewalks | C-4: General Commercial |
| Vanderburgh Street Labels | Letter Of Credit Or Sidewalks Waived | R-1: Residential |
| Streets | Special_Use_Docket | World_Hillshade |
| Vanderburgh County | Zoning | C-1: Neighborhood Commercial |



Vanderburgh County Assessors, GIS Department, Area Plan Commission, , City of Evansville Engineer Department, Vanderburgh County Surveyor Office, Area Plan Commission, Evansville, Vanderburgh County Area Plan Commission- MLW, Area Plan Commission, City of