

ONLINE ONLY AUCTION

WITH LIVE ONLINE BID-CALLING

FROM THE COLLECTION OF LEE BACKULICH

2451 Blacklick Rd. NW • Baltimore (Columbus), OH 43105

THURSDAY, JULY 13, 9:00 AM ET

Inspection: Wednesday, July 12, 9:00 am - 4:00 pm

LIFE-LONG ACCUMULATION TOOLROOM, FABRICATION & WOODWORKING MACHINERY, FEATURING:

- (4) Hardinge HLV-H Tool Room Lathes
- Hardinge HVM Vertical Mill (Rare Item)
- Hardinge TM-UM Horizontal Mill • Hardinge TLP Tool Room Lathe
- (4) Hardinge TL Vintage Lathes (1910's-1920's)
- Huge Quantity Hardinge Accessories & Spare Parts
- Reid 618 Surface Grinder • Northfield 12" Jointer
- Misc. Woodworking Machinery • (7) Vidmar & Lista Tool Cabinets
- Bearings & Machine Parts and Accessories

BidSpotter

THOMPSON Auctioneers, Inc.

Steve Thompson, Auctioneer • Ohio License #63199566109
937-426-8446 • www.thompsonauctioneers.com



1 of 4

Hardinge HLV-H Tool Room Lathes (1 of 4)



Hardinge Vertical Tool Room Mill (Rare)

MILLS, HARDINGE LATHES, WOODWORKING MACHINERY & MORE!

LIFELONG ACCUMULATION HARDINGE LATHES, MILLS, WOODWORKING MACHINERY & MORE!

ONLINE ONLY AUCTION

WITH LIVE ONLINE BID-CALLING

FROM THE COLLECTION OF LEE BACKULICH

2451 Blacklick Rd. NW • Baltimore (Columbus), OH 43105

THURSDAY, JULY 13 9:00 AM ET



1 of 4

Hardinge HLV-H Tool Room Lathes (1 of 4)

THOMPSON Auctioneers, Inc.
3519 St. Rt. 235
Fairborn, Ohio 45324

Pre-Sort First Class
U.S. POSTAGE
PAID
Dayton, Ohio
Permit No. 543

LIFELONG ACCUMULATION HARDINGE LATHES, MILLS, WOODWORKING MACHINERY & MORE!

ONLINE ONLY AUCTION

WITH LIVE ONLINE BID-CALLING

FROM THE COLLECTION OF LEE BACKULICH

2451 Blacklick Rd. NW • Baltimore (Columbus), OH 43105

THURSDAY, JULY 13 9:00 AM ET

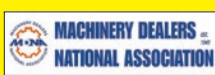


Hardinge TM-UM Horizontal Mill



Northfield Model 12HD, 12" Jointer

THOMPSON Auctioneers, Inc.



Steve Thompson, Auctioneer • 937-426-8446
OH Lic. 631995661096 • thompsonauctioneers.com

ONLINE ONLY AUCTION WITH LIVE BID CALLING



Delta Milwaukee Model 22-101, 13" Planer

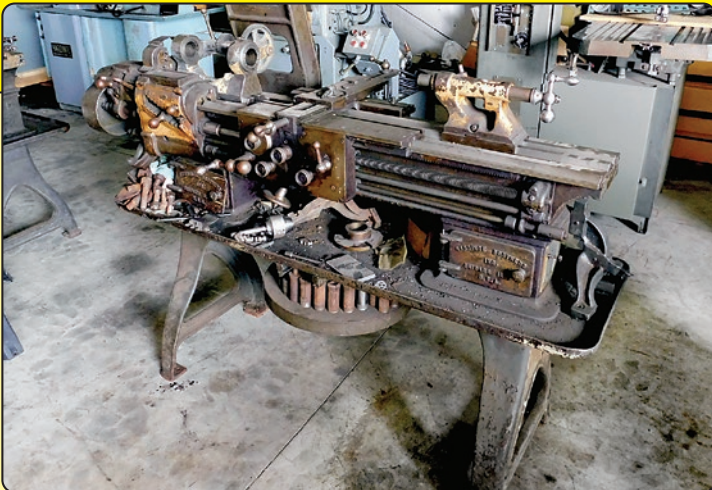


Hardinge HLV-H Tool Room Lathes (1 of 4)

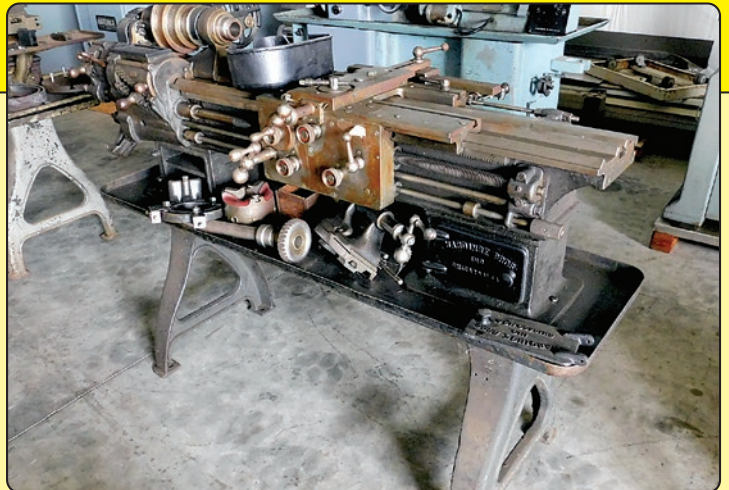
1 of 4



Reid 618 Surface Grinder, Rebuilt



Hardinge Model TL Vintage Lathes (4 available)



Hardinge Model TL Vintage Lathes (4 available)



Partial View, Machine Bearings



Vidmar and Lista Tool Cabinets (7 available)

HARDINGE MACHINERY

- **Hardinge** Model HLV-H Precision Tool Room Lathe, s/n HLV-H-11339-T
- **Hardinge** Model HLV-H Precision Tool Room Lathe, s/n HLV-H-211-T, Accurite D.R.O.
- **Hardinge** Model HLV-H Precision Tool Room Lathe, s/n HLV-H-100
- **Hardinge** Model HLV-H Precision Tool Room Lathe, s/n HLV-BK-2208-3
- **Hardinge** Model TLP Precision Tool Room Lathe, s/n TLP-59-13969
- (4) **Hardinge** Model TL Vintage Lathes, One New 1917, Each of (4) In Various States of Rebuild
- **Hardinge** Model HVM Vertical Mill, Rare
- **Hardinge** Model TM-UM Horizontal Mill
- **Hardinge** Model HSL-59 Speed Lathe, with Cabinet

WOODWORKING MACHINERY

- **Northfield** Model 12HD, 12" Jointer, s/n 56921-C, Rebuilt
- **Delta Milwaukee** Model 22-101, 13" Planer
- **Onsrud** Model 3025 Inverted Pin Router, s/n 30508
- **B.M. Root** Model D-150 Horizontal Drill/Borer, s/n 6575
- **Rockwell Delta** Spindle Shaper, s/n 105-5098
- **Dewalt** Model GA-25, 16" Radial Arm Saw, s/n 296961
- **Baxter Whitney** Model 77 Table Saw, s/n 13009

TOOLING, ACCESSORIES AND SPARE PARTS

- (7) **Vidmar and Lista** Tool Cabinets
- Huge Quantity **Hardinge** Tooling, Attachments, and Spare Parts, Much Like New Condition
- Large Quantity **Machine Bearings**
- Many Additional Items

THOMPSON Auctioneers, Inc.

www.thompsonauctioneers.com • 937-426-8446

ONLINE ONLY AUCTION WITH LIVE BID-CALLING: Online Bidding managed by Bidspotter.com. Place online pre-bids leading up to sale date on Bidspotter.com. On Auction Date, visit Bidspotter.com to join live webcast, view live auction of each lot, and enter any bids on-line. Only online bids accepted - NO onsite bidding.

TERMS: A 18% BUYER'S PREMIUM IS IN EFFECT FOR THIS AUCTION. Everything is selling on an "As Is, Where Is, In Place" Basis with NO Warranties or Guarantees of any kind. It is the Buyer's responsibility to Inspect Before Bidding. Payment is to be made within 24 hours after the completion of the auction with Cash, Check, Wire Transfer, Credit Card, Visa, MC, Discover, AMEX. An additional 3% Fee added to invoices paid with a Credit Card. Removal is the Buyer's Responsibility Expense and Risk. IF YOU REQUIRE ASSISTANCE IN REGISTERING, OR FOR PROXY BIDDING, CALL OUR OFFICE AT 937-426-8446.

BidSpotter

CIT Direct Capital

For pre-approval financing options, call Casey Goodell, Direct Capital, at 603-766-9365.

Thinking of an Auction? Need an Appraisal? Know of a Plant Closure? Call Bryan Harvey, 937-609-6354 or Steve Thompson, 937-426-8446.

TO REGISTER & BID ON THIS AUCTION GO TO THOMPSONAUCTIONEERS.COM OR BIDSPOTTER.COM