

PREMIER LAND & EQUIPMENT AUCTIONS

Northeast Ohio

Lorain County

1,002 \pm Acres

4 Farms
15 Tracts

Turn-Key Farming Operation
High Percentage Tillable Farmland
Productive Soils with Extensive Tiling
CRP Income
148,500 Bushel Grain Storage / Homes & Outbuildings
Future Development Potential
Tract Sizes Ranging from 2.05 \pm Acres to 159 \pm Acres

LAND AUCTION - Thursday, March 15 • 11AM
EQUIPMENT AUCTION - Tuesday, March 20 • 10AM

Near Elyria & Oberlin, Ohio

An Excellent Lineup of
Quality Farm Equipment!

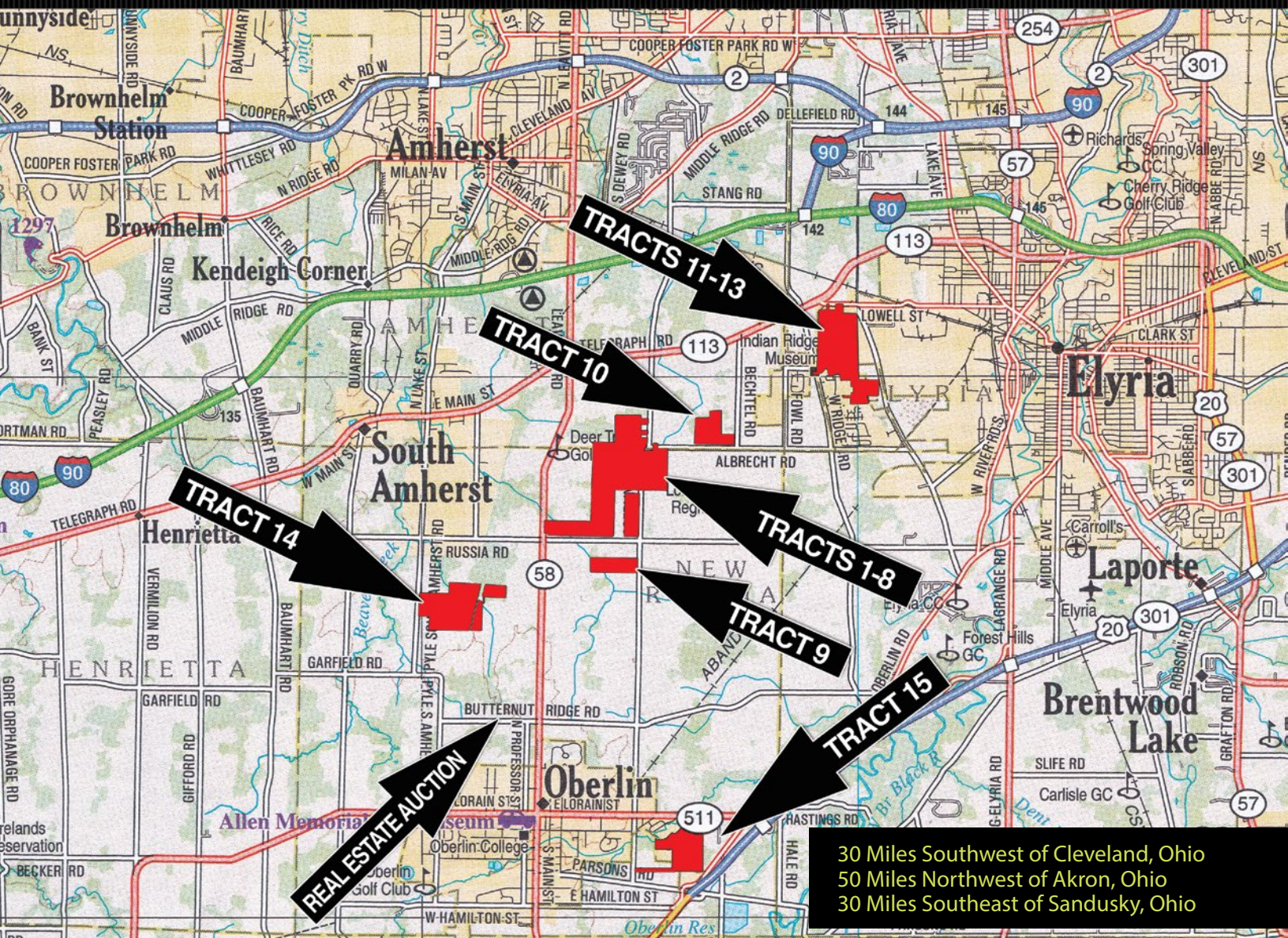


THE WENDT GROUP
Land & Agricultural Asset Auctions

614.626.SOLD
www.thewendtgroup.com

PREMIER LAND & EQUIPMENT AUCTIONS

Near Elyria, Ohio Lorain County



Attention Farmers & Investors!



FOR FURTHER INFORMATION
ON THE REAL ESTATE, CONTACT:
DALE EVANS, GENERAL MANAGER
260-894-0458

1,002[±] Acres

LAND - Thursday, March 15 • 11AM EQUIPMENT - Tuesday, March 20 • 10AM



REAL ESTATE AUCTION SITE DIRECTIONS: The Lodge of New Russia Township, 46300 Butternut Ridge Road Oberlin, Ohio 44074. From the Ohio Turnpike take Exit 140 onto SR-58 South for 4.5 miles to Butternut Ridge Road. Turn right (west) onto Butternut Ridge Road and drive 0.4 miles to The Lodge on your right.

From the intersection of SR-511 and SR-58 in Oberlin, take SR-58 north for 1 mile to Butternut Ridge Road and turn left (west). Drive 0.4 miles on Butternut Ridge Road to The Lodge on your right.

AUCTION PROPERTY DIRECTIONS:

TRACTS 1-8: From the Ohio Turnpike take Exit 140 onto SR-58 south. Follow SR-58 south for 0.5 miles to the first stoplight at SR-113. Turn left (east) on SR-113 and drive .8 mile to the 1st stoplight at Oberlin Road and turn right (south). Travel 1 mile to the farm. Watch for auction signs!

TRACT 9: From the farm headquarters at Tract 3, travel south on Oberlin Road for 1.2 miles. The farm is on the right beyond Russia Road.

TRACT 10: From the farm headquarters at Tract 3, travel north on Oberlin Road for .4 mile to Albrecht Road and turn right (east). Follow Albrecht Road .5 mile to the farm on the left.

TRACTS 11-13: From the farm headquarters at Tract 3, travel north on Oberlin Road for .4 mile to Albrecht Road and turn right (east). Follow Albrecht Road 2 miles to West Ridge Road and turn left (north). Follow West Ridge Road north to Turner Boulevard and turn right (east). Travel on Turner Boulevard .2 mile to the farm on both sides of the road.

TRACT 14: From the farm headquarters at Tract 3, travel south Oberlin Road 1 mile to Russia Road and turn right (west). Follow Russia Road 2.4 miles to Pyle South Amherst Road and turn left (south). Travel .5 mile on Pyle South Amherst Road to the farm on the left.

TRACT 15: From the intersection of SR-511 and SR-58, take SR-511 East 1 mile to South Oberlin Road and turn right. Follow South Oberlin Road .5 mile to the property on your left.

REAL ESTATE INFORMATION DATES:

Thursday, February 15th • 3:30 - 5:30pm

Thursday, March 1st • 3:30 - 5:30pm

Meet a Representative from The Wendt Group at the farm shop on Tract 3

FSA and Tax Information available upon request

For further information, contact Dale Evans, General Manager 260-894-0458

REAL ESTATE AUCTION TERMS & CONDITIONS

PROCEDURE: The property will be offered in 15 individual tracts, any combination of tracts, and as a total 1,002[±] acre unit. There will be open bidding on the individual tracts and any combinations during the auction as determined by the auctioneer. Bids on the tracts, tract combinations, and the total property may compete.

DOWN PAYMENT: A 10% down payment is required on the day of the auction for individual tracts or combinations of tracts. The down payment may be made in the form of cashier's check or personal check. Ohio Law states that the down payment must be deposited in the Broker's non-interest-bearing trust account within 24-48 hours after receipt of such funds. **YOUR BIDDING IS NOT CONDITIONAL UPON FINANCING, SO BE SURE YOU HAVE ARRANGED FINANCING, IF NEEDED, AND ARE CAPABLE OF PAYING CASH AT CLOSING.**

ACCEPTANCE OF BID PRICES: The successful bidder(s) will sign a Purchase Agreement at the conclusion of the auction. All final bid prices are subject to Seller's acceptance or rejection. **EVIDENCE OF TITLE:** The Seller will provide a preliminary title opinion, certificate, or report to be made available to prospective bidders for review prior to bidding. If any Buyer elects to purchase title insurance, the cost thereof will be at such Buyer's sole expense. Seller will convey title free and clear of liens, but otherwise subject to all easements and matters of record. All tracts sold "AS IS".

DEED: Appropriate deed will be delivered at closing.

CLOSING: Closing will take place 45-60 days after auction date, or as soon thereafter as Seller's applicable closing documents are completed.

POSSESSION: Possession at closing.

REAL ESTATE TAXES: The Buyer(s) will assume the real estate taxes for the calendar year 2018 due and payable in 2019 and thereafter. If usage is changed, the Buyer is responsible for CAUV Recoupment.

TRACT MAPS; ACRES: Tract maps, depicted boundaries, and stated acres are approximates based on county parcel data, current legal descriptions, and/or aerial mapping software and are not provided survey products.

SURVEY: Vector Surveying Services, LLC will prepare new surveys and legal descriptions according to the post-auction results. Combination purchases will only receive a perimeter survey. The type of survey provided will be at the Seller's option. Survey costs will be shared equally between Buyer and Seller.

EASEMENTS: Sale of the property is subject to any and all easements of record.

MINERAL RIGHTS: The sale will include 100% of the mineral rights (if any) owned by the Seller.

AGENCY: The Wendt Group and its representatives are exclusively the agents of the Seller.

AUCTION CONDUCT: Conduct of the auction and increments of bidding are at the sole discretion of the Auctioneer. The Seller and Selling Agents reserve the right to preclude any person from bidding if there is any question as to the person's credentials, fitness, etc.

All decisions of the Auctioneer are final.

DISCLAIMER AND ABSENCE OF WARRANTIES: All information contained in this brochure and all related materials are subject to the terms and conditions outlined in the Purchase Agreement. The property is being sold on an "AS IS, WHERE IS" basis, and no warranty or representation, either express or implied, concerning the property is made by the Seller or the Auction Company. All sketches and dimensions in the brochure are approximate. Each potential bidder is responsible for conducting his or her own independent inspections, investigations, inquiries, and due diligence concerning the property. The information contained in this brochure is subject to verification by all parties relying on it. No liability for its accuracy, errors, or omissions is assumed by the Seller or the Auction Company.

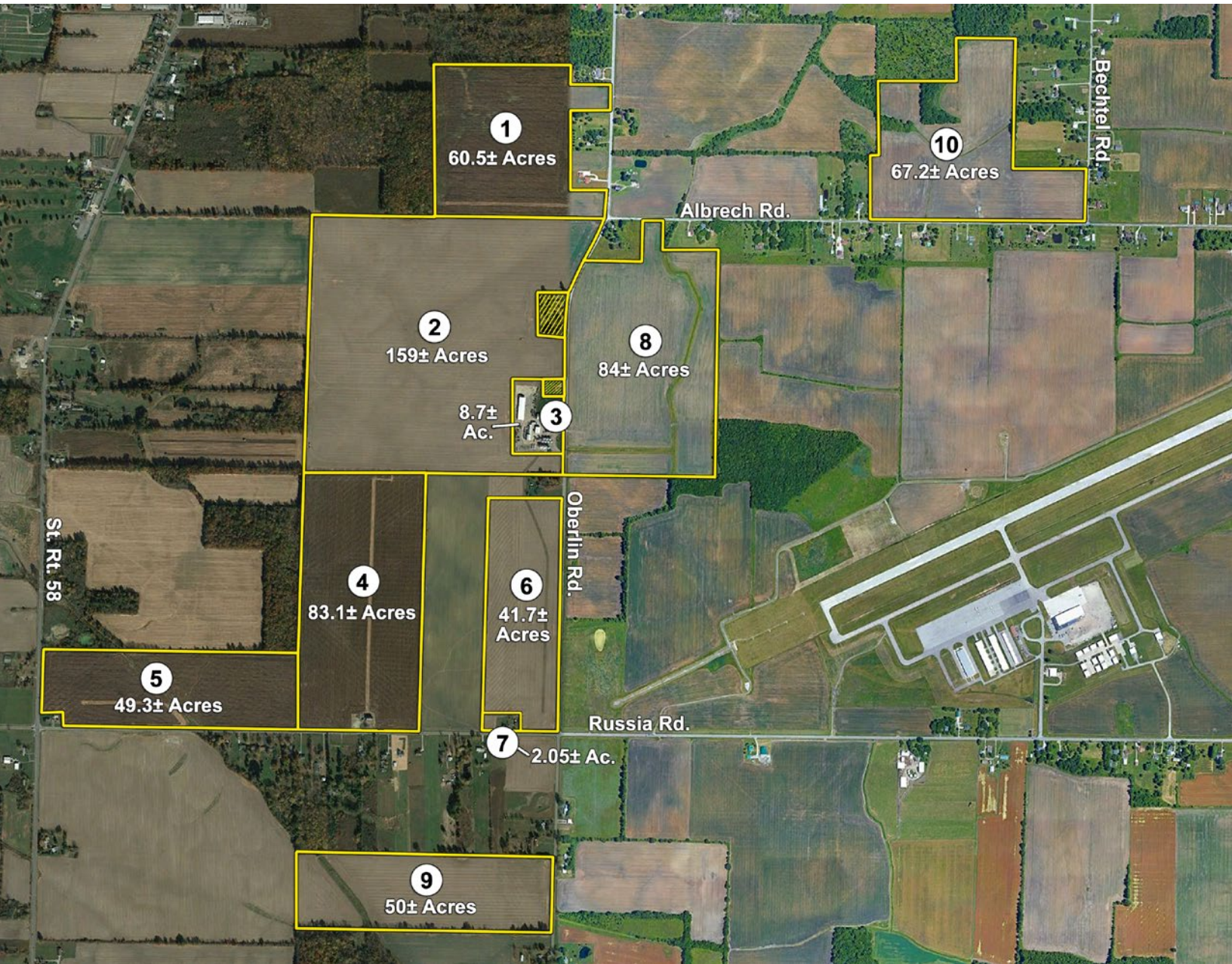
ANY ANNOUNCEMENTS MADE THE DAY OF THE AUCTION TAKE PRECEDENCE OVER PRINTED MATERIAL OR ANY OTHER ORAL STATEMENTS MADE.

PREMIER LAND AUCTION

Near Elyria, Ohio

Lorain County

Tracts 1-10



TRACT	ACRES	ESTIMATED TILLABLE ACRES	COMMENTS
1	60.5±	60±	Tillable
2	159±	158±	Tillable
3	8.7±	0	Home, Grain Storage, Farm Buildings
4	83.1±	81±	Tillable, Gravel Lot and Barn
5	49.3±	47±	Tillable
6	41.7±	41±	Tillable
7	2.05±	1±	Home with 5 bedrooms and 1 bath
8	84±	73±	Tillable
9	50±	48±	Tillable, 1.12 Acres CRP
10	67.2±	62±	Mostly Tillable



Tract 10

1,002± Acres

THURSDAY, MARCH 15 • 11AM

Held at the Lodge of New Russia Twp. - Oberlin, OH



Tracts 1 & 2



Tracts 2-4, 6-8



Tract 3



Tracts 4-5



Tract 8



Tract 9

TRACT 3 DESCRIPTION:

9908 Oberlin Rd, Elyria, OH 44035. The 8.7± acre farm headquarters includes an updated 3-bedroom, 1-bathroom home with a full basement and a detached 20'x28' garage, as well as multiple farm outbuildings and grain storage facilities. The grain storage facilities feature (3) 25,000-bushel bins with drying floors, (7) 10,000-bushel bins with dryers, and a 3,500-bushel wet bin. Abundant equipment storage and work space is available with a 50'x60' shop, 320'x60' three-sided pole barn, 50'x70' three-sided pole barn, an 80'x20' storage shed, a 20'x40' shed, and a 40'x60' three-sided pole barn with adjoining 20'x100' covered storage area.

The heated and insulated 50'x60' farm shop features a full concrete floor, office and bathroom, multiple lofted storage areas, an in-floor lift, one 24'x14' overhead door, and one 20'x14' overhead door. Compressed air and electric are available throughout the interior, and compressed air, electric, and water are available on the exterior. An exhaust system helps clear the shop of welding and equipment fumes.

Please note that the following items located on Tract 3 are not included in the sale of the real estate and will be available for sale at the equipment auction on March 20th: The 25,000-bushel Brock grain bin, the grain dryer, a 6,000-gallon propane tank, an 8,000-gallon propane tank, a 12,000-gallon ammonia/propane tank, the 10" wet bin auger and the 8" dry grain auger. There are also (4) 1,000-gallon propane tanks that are not owned and will not be included in the sale of the real estate or at the equipment sale.

PREMIER LAND AUCTION

Near Elyria, Ohio

Lorain County

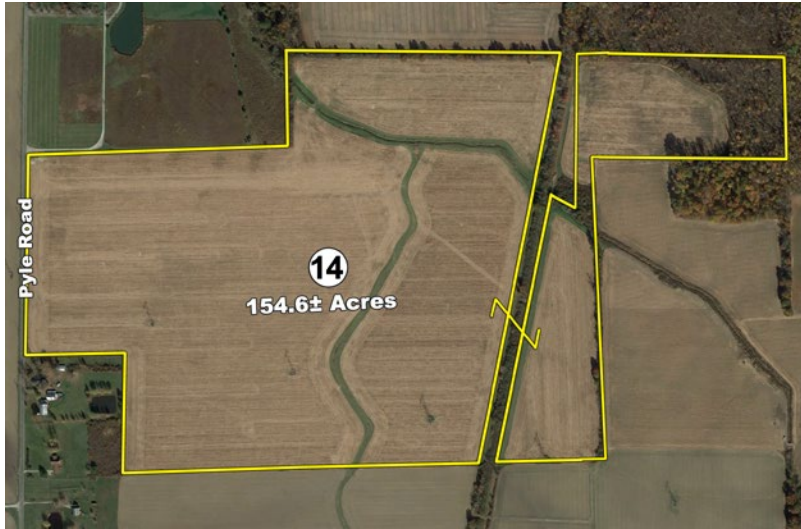
Tracts 11 - 13

TRACT	ACRES	ESTIMATED TILLABLE ACRES	COMMENTS
11	66.4±	63±	Tillable, Development Potential
12	64.3±	55±	Mostly Tillable, Development Potential
13	36.6±	29±	Mostly Tillable, Development Potential



1,002[±]
Acres

THURSDAY, MARCH 15 • 11AM
Held at the Lodge of New Russia Twp. - Oberlin, OH



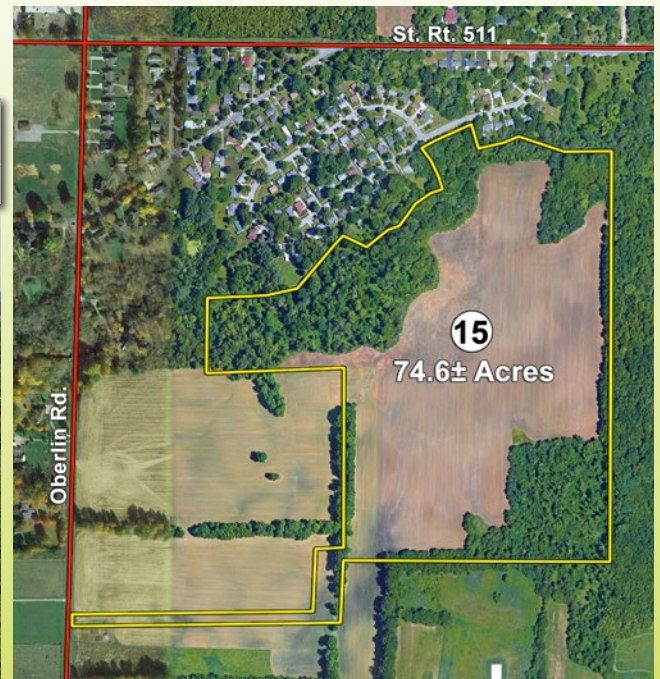
Tract 14

TRACT	ACRES	ESTIMATED TILLABLE ACRES	COMMENTS
14	154.6±	151±	Mostly Tillable, Wooded, 2.29 Acres CRP



Tract 15

TRACT	ACRES	ESTIMATED TILLABLE ACRES	COMMENTS
15	74.6±	42±	Mix of Tillable and Wooded



PREMIER EQUIPMENT AUCTION

Near Elyria, Ohio

Lorain County



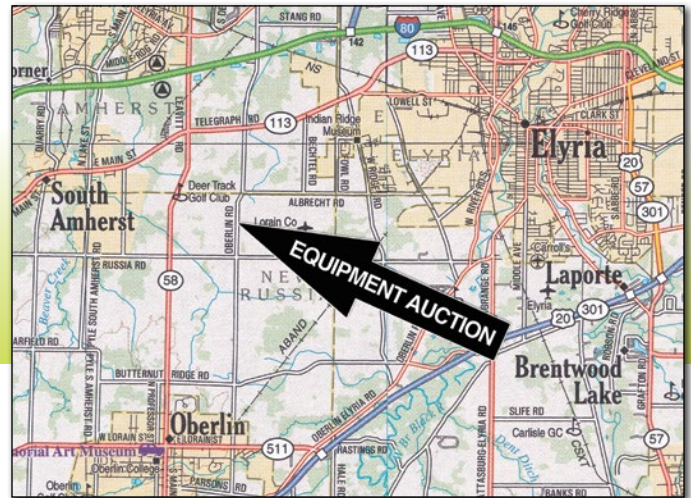
EQUIPMENT AUCTION LOCATION: 9908 Oberlin Rd, Elyria Ohio

DIRECTIONS: From St Rt 511 in Oberlin take State Route 58 North 3 miles to Russia Rd. Turn Right (East) for 1 mile and then turn Left (North) on Oberlin Rd. 9908 Oberlin Rd is ½ mile on the Left (West). Watch for Auction signs.

Auctioneers Note: Due to the retirement of the Burrer family, we will be selling the equipment they used in their farming operation. This is a diverse, well-maintained line of equipment. Due to large volume of spare parts and shop tools, we will be running 2 rings all day. Loading available Auction day - bring your trailer and a friend!

EQUIPMENT QUESTIONS: TOM BURRER 440-785-2161

Auction Manager Nick Cummings, CAI 740-572-0756



EQUIPMENT INSPECTIONS:

Friday, March 16th • 9am - 1pm

Saturday, March 17th • 9am - 1pm

9908 Oberlin Rd, Elyria Ohio



BID ONLINE WITH BIDSPOTTER.COM

For online bidding questions call Nathan Whitney 740-505-0482



TRACTORS:

- **Case International 9380** 4WD tractor, 7050 hrs, CHA, 4 hyd remotes, 710/70R38 duals, SN JEE0072446
- **Case International 9280** 4WD tractor, 7362 hrs, CHA, 4 hyd remotes, 24.5-32 duals, SN JCB0029028
- **Case International 9370** 4WD tractor, 8746 hrs, CHA, 4 hyd remotes, PTO, 20.8-42 duals, SN JEE00721207
- **Case International 9130** 4WD tractor, Row Crop Special, 10395 hrs, CHA, 3 hyd remotes, 3 pt hitch, PTO, 18.4-38 duals, skip-shift trans, steerable front axle, SN 17901206
- **Steiger Cougar** 4WD tractor, 1239 hrs, CHA, 3406 CAT, 3 hyd remotes, 3 pt hitch, 23.1-34 duals, SN 111-03556
- **Steiger Panther** 4WD tractor, 4302 hrs, CHA, 3406 CAT, 4 hyd remotes, 3 pt hitch, 23.1-34 duals, SN 123-00868
- **White 4-150** 4WD tractor, 4446 hrs, CHA, 3208 CAT, 3 hyd remotes, 540 PTO, 18.4-38 duals, SN 246-773-403
- **Ford FW-60** 4WD tractor, 6045 hrs, CHA, 903 Cummins, 4 hyd remotes, 23.1-34 duals, SN X400185
- **Ford FW-60** 4WD tractor, 7358 hrs, CHA, 903 Cummins, 3 hyd remotes, 3 pt hitch, 23.1-34 duals, SN X400106

- **John Deere 4840** tractor, 9458 hrs, CHA, 8 speed PS, 3 hyd remotes, 3 pt hitch, 1000 PTO, quick hitch, 18.4-42 duals, SN 001385R
- **John Deere 4840** tractor, approx. 6000 hrs, CHA, 8 speed PS, 3 hyd remotes, 3 pt hitch, 1000 PTO, quick hitch, 20.8-38 duals, SN 001576R
- **John Deere 4020** tractor, 9260 hrs, 1 hyd remote, 3 pt hitch, PTO, 18.4-34 tires, SN 163220R
- **John Deere 4020** tractor, turbo, 8215 hrs, 1 hyd remote, 3 pt hitch, PTO, quick hitch, 18.4-34 tires, SN T215R105373P
- **Oliver 2255** tractor, CHA, 3906 hrs, 3208 CAT, 6 speed trans with 3 speed hydro, 2 hyd remotes, 3 pt hitch, PTO, 20.8-38 dual tires, SN 9569055
- **Oliver 2050** tractor, CHA, 4565 hrs, 6 speed trans with 3 speed hydro, 2 hyd remotes, 3 pt hitch, PTO, fender fuel tanks, 18.4-38 dual tires
- **Oliver 1950T** tractor, CHA, 2752 hrs, 6 speed trans with 3 speed hydro, 2 hyd remotes, 3 pt hitch, 540 PTO, fender fuel tanks, 18.4-38 tires
- **Oliver 1800** tractor, narrow front, 5866 hrs, 6 speed trans with 2 speed hydro, 2 hyd remotes,





TUESDAY, MARCH 20 • 10AM

9908 Oberlin Road, Elyria Ohio



- **Farmall H** tractor, narrow front
- Spare tractor tires

TILLAGE:

- **Case IH 730B** eco-tiger disc ripper, 7 shank, rear leveling disc, hyd fold
- **Case IH 6500** disc chisel, 11 shank, rear leveler
- **Glenco** disc chisel, 11 shank, rear leveler
- **32' Krause** disc, hyd fold, 9" spacing, single bar harrow, rock flex
- **30' John Deere 330** disc, 9" spacing, hyd fold, rear hitch
- **20' John Deere 220** disc, 9" spacing, hyd fold
- **15' disc**, notched blades, hyd raise
- **31' Krause Do-All**, hyd adj disc depth, walking tandem, 5 bar spike tooth harrow, rear hitch
- **36' Great Plains** Ultra till, double hyd fold, rear basket, rear hitch
- **34' Willrich 3400** field cultivator, tandem axle, 5 bar spike tooth harrow
- **27' Willrich** field cultivator, 3 bar coil tine harrow
- **30' Brillion** cultmulcher, flat hyd fold, danish tine, lights, like new
- **37.5' Brillion WFP** packer, X-fold, notched solid wheels, hyd fold, hyd raise
- **(2) 36' Brillion XL** packer, X-fold, notched solid wheels, hyd fold, hyd raise
- **34' Brillion XL** packer, X-fold, notched solid wheels, hyd fold, hyd raise
- **30' Brillion** row crop cultivator, 12 row, 3 pt hitch
- **15' John Deere** row crop cultivator, 6 row, 3 pt hitch
- **24' Evertsman** land plane, 3pt, rear dolly wheels, hyd fold, danish tine
- **15' John Deere** rotary hoe, 3 pt

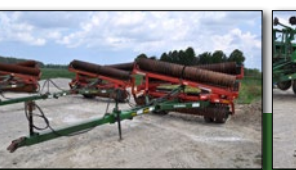
- **16' 5 bar spike harrow**, manual fold, hyd raise

PLANTING:

- **40' Kinze 3600** 16 row corn planter, dry fertilizer w/Kinze single disc openers, No-Till coulters with floating row cleaners, Martin spike closing wheels and drag chains, markers, ground drive, w/monitor
- **40' Kinze 3600** 16/31 row planter, No-till coulters, Martin spike closing wheels and drag chains, box ext, markers, ground drive, w/monitor
- **24' Great Plains** Solid Stand 24 drill, 7.5" spacing, No-till coulters, seed lock wheels, double V press wheels, markers, coil tine drag

SPRAYERS, FERTILIZER, & MANURE APPLICATION EQUIPMENT:

- **Rogator 854** sprayer, 3360 hrs, 80' boom, 800 gal SS tank, 14.9-46 tires, SN 850440902
- **Big A 2500** 3 wheel sprayer, 5765 hrs, 555 Cummins diesel, 1600 gal SS tank, 80' boom, 66x43.00-25 tires, SN A256266
- **Floater 3000** 3 wheel sprayer, 4600 hrs, 3208 CAT diesel, 1400 gal SS tank, 80' boom, 66x43.00-25 tires, SN 6126964
- **Big A** 3 wheel spreader, 8352 hrs, 8.3 Cummins diesel, New Leader L2020 bed, belt over chain, 66x43.00-25 tires
- **Big A 2500** 3 wheel spreader, Ford Industrial V-8 gas, belt over chain, 66x43.00-25 tires
- **Big A** 3 wheel spreader, Knight side slinger bed, V-8 Cummins diesel engine, 66x43.00-25 tires,
- **11 shank** pull type NH3 applicator, disc sealers, wing gauge wheels, hyd fold, hyd raise



PREMIER EQUIPMENT AUCTION

Near Elyria, Ohio

Lorain County



- **11 shank** pull type NH3 applicator, disc sealers, wing gauge wheels, hyd fold, hyd raise
- **(11) 1000 gal** NH3 tanks on running gear
- **Hagedorn Hyrda-Spread** 410 manure spreader, tandem axle, hyd lift gate, poly floor, horizontal beaters, tandem axle, 550/60-22.5 tires, SN 2950
- **Knight slinger 725** manure spreader, side discharge, 19L-16.1 tires, 1000 PTO
- **300 gallon** pull type spot sprayer



HARVEST EQUIPMENT:

- **John Deere 9760** combine, 4x4, 2829 eng, 1913 sep, XL unload, yield monitor, 68x50x32 floater tires, 28L26 rear, SN 5711881
- **John Deere 9750** combine, 4x4, 3001 eng, 1940 sep, yield monitor, 35.5L32 single tires, 28L 26 rear, SN S696273
- **John Deere 9750** combine, 4x4, 5764 eng, 4224 sep, single point hookup, 1250x45Bx32 logger tires, 28L26 rear, SN S691231
- **John Deere 9500** combine, 4x4, 3659 eng, 2443 sep, 30.5 x 32 single tires, 18.4x26 rear, SN X638646
- **John Deere 635F** grain head, Hydraflex, full finger, rock dam, single point, SN H00635F703016
- **John Deere 930F** grain head, full finger, rock dam, SN H00930F701983
- **John Deere 925** grain head
- **John Deere 893** poly corn head, oil bath, hyd adjustable deck plates, SN H00983X706426
- **John Deere 843** corn head, Oil bath, PTO hookup, SN H00843X645750
- **John Deere 643** corn head, oil bath, SN 471526
- **John Deere 643** corn head, oil bath, NO PTO shaft, SN H00643X635541
- **John Deere 643** corn head, grease gearcase, chain hook up, SN 421526
- **25' UM** header wagon
- **30' UM** header wagon, NEW 9.00x10 tires
- **35' J&M** header wagon, 225/75R15 tires
- **Killbros 1400** grain cart, 30.5x32 bar tires, 1000 pto, lights
- **Killbros 1200** grain cart, 24.5x32 bar tires, 1000 pto
- **6", 8", and 10" grain augers**, electric and PTO drive



TRUCKS AND TRAILERS:

- **1987 Peterbilt 377** semi truck, aprox 1,000,000 miles, 855 Cummins engine, 13 sp trans, 24.5 tires, tandem axle, twin screw, air ride, set forward axle, PTO, single line wet kit, VIN1XP-CD29X4HN212667
- **1987 Peterbilt 377** semi truck, shows 286,226 miles, 855 Cummins engine, 15 sp trans, 24.5 tires, tandem axle, twin screw, air ride, PTO, single line wet kit, rebuilt from fire damaged truck, miles shown are on rebuilt engine
- **1989 Peterbilt 377** semi truck, 605,958 miles, 855 Cummins engine, 13 sp trans, 24.5 tires, tandem axle, twin screw, air ride, PTO, single line wet kit, VIN 1XP-CD29XOKD271289
- **2004 Peterbilt 378** semi truck, 1,095,243 miles, C-15 CAT engine, 10 speed with auto top gear trans, 22.5 tires, tandem axle, twin screw, air ride, PTO, single line wet kit, VIN XP7D-B9X94D819102
- **1994 Freightliner FLD 120** semi truck, 1,001,842 miles, 3406B CAT engine, 10 sp trans, 22.5 tires, tandem axle, twin screw, air ride, PTO, single line wet kit, VIN 2FUYSYB3RA616276
- **1995 Freightliner FLD 120** semi truck, shows 48,125 miles, 3406E CAT engine, 10 sp trans, 22.5 tires, tandem axle, twin screw, air ride, PTO, single line wet kit, VIN 2FUYSYB15A765467
- **(4) Fruehauf/Hobbs** end dump trailers, Years 1964-1973, 28.5' long alum beds, electric tarps, 22.5 tires, spring ride, end gate with grain chute
- **1978 Fruehauf** end dump trailer, 30' long alum bed, poly floor liner, electric tarp, 22.5 tire, spring ride tri axle, end gate with grain chute
- **1959 Kingham** end dump trailer, 24' long alum bed, poly floor liner, roll tarp, spring ride tandem axle
- **Lowboy trailer** with tanks and gas powered pump, no brakes, NO TITLE





TUESDAY, MARCH 20 • 10AM

9908 Oberlin Road, Elyria Ohio



- **Lowboy trailer**, 2' dovetail
- **Custom seed tender trailer**
- **1974 Ford L-800** dump truck, 3208 Cat V-8 diesel, 5+2 trans, tandem axle, 20' dump bed, steel frame, wood floor and alum sides, roll tarp, air brake
- **1965 Ford C-80** cabover dump truck, gas engine, 5 sp trans, tandem axle, 20' bed
- **1993 Ford** single axle truck, gas V-8, 5+2 trans, air brake, gravity box bed, hyd drive auger, Auger Mate power unit, used for seed and fertilizer
- **1972 GMC** single axle truck, gas V-6, 5+2 trans, gravity box bed, hyd drive auger, Auger Mate power unit, used for seed and fertilizer
- **1959 Ford** single axle truck, gas V-8, 5+2 trans, gravity box bed, hyd drive auger, Auger Mate power unit, used for seed and fertilizer
- **1969 Ford** bucket truck, gas, 5+2 trans
- **2004 Ford** pickup truck, F-250, 2wd, gas V-8, auto, 4 door, 8' bed, 184,590 miles
- **1995 Chevy** pickup truck, 2500, 4x4, gas V-8, auto, ext cab, 8' bed, 313,337 miles
- **1992 GMC** pickup truck, 2500, 2wd, 6.2L diesel V-8, auto, reg cab, 8' bed, 202,714 miles
- **1989 GMC** pickup truck, 2500, 4x4, gas V-8 knocks, auto, reg cab, 8' bed, snowplow, 143,768 miles
- **1988 Chevy** pickup truck, 3500, 4x4, gas V-8, auto, reg cab, 8' bed, snowplow

FARM MAINTENANCE:

Fiat FR-15B payloader, 5534 hrs, 11' bucket, 23.5-25 tires, engine rebuilt 4 years ago, new torque converter, SN 2T59257 • **International 510** payloader, 8199 hrs, 15.5-25 tires, SN 4393 • **Case 580** construction king backhoe, shows 1955 hrs, rebuilt engine, SN 8665894 • **Case 1450** dozer, 10' 4 way blade, 20" track, SN 8380144 • **Case 850** dozer, 5403 hrs, 9' 6 way blade, 16" tracks, SN 7073121 • **Case 880D** excavator, 7975 hrs, side tilt, 36" bucket, SN 6280983 • **Schulte rock picker**, PTO drive reel, hyd dump, 18.4-16.1 bar tires, SN RS1HL • **20' Bush Hog 2620** rotary mower, hyd fold, stump jumper, front chains, solid tires • **6' Woods** side arm ditch mower, 3 pt, 540 PTO • **Ingersoll Rand 185cfm**

air compressor, General Motors diesel engine, tandem axle trailer • **Cat GC25 forklift**, 5000 lb cap, 3 stage mast, solid tires, LP, sideshift • **Cat T80D forklift**, 8000 lb cap, 3 stage mast, solid tired, LP • **Yale forklift**, 4500 lb cap, 3 stage mast, solid tires, LP, 7' forks • **Nissan 80 forklift**, 6950 lb cap, 3 stage mast, solid tire, LP, sideshift, 2 speed

TANKS:

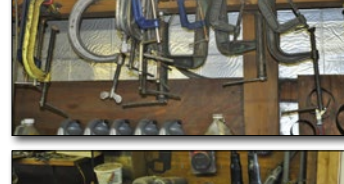
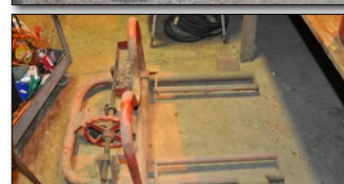
2,000 gal dual wall fuel tank • **(2) 1,000 gal** dual wall fuel tank • **(2) 2,000 gal** steel fuel tank • **1,000 gal** steel fuel tank • **11,500 gal** vertical steel tank • **8000 gal** propane tank • **6000 gal** propane tank • **12,000 gal** horizontal NH3 storage tank. The following tanks are off-site at Greenwich, OH: **12,000 gal** propane tank • **6,000 gal** propane tank • **(4) 1,000 gal** propane tank

GRAIN DRYER & BINS:

• **36' Brock 25,000 bu.** grain bin
• **AS 1000 Super B** grain dryer, 3 phase, LP • **75 HP**, 3 phase rotary phase converter. The following grain bin is off-site at Greenwich, OH: **36' Conrad American 25,000 bu.** grain bin, aeration floor, auto grain spreader, w/2 aeration fans

SHOP TOOLS:

4 oxy/acty torch sets • **Folding** engine hoist • **10,000 lb** air operated hi-lift jack • **Hi-lift** transmission jack • **Transmission** floor jack • **Tractor/truck** dual wheel floor jack • **10 ton** air/hyd Blackhawk floor jack • **Air/hyd** bottle jacks • **Miller Spectrum 875** plasma torch • **Battery** grease guns • 110v angle **grinders** • **Bench** Grinder • **Battery** chargers/main-tainers • **Tire** spoons • **Crowbars** • **Sledge** hammers • 3/4' pipe **wrenches** • **Hand-**tools, wrench and socket sets • 3/4 drive **sockets and ratchets** • Axle nut sockets • 2 stage 220v 7.5hp **air compressor** • **Air impact** wrenches 1/2 and 3/4 drive • **Air hammers** • **Needle** scaler • **Jenny HPW** 2040 hot water pressure washer • **Truck** brake shoes, brake chambers • **Engine** oil and fuel filters • **Fan** and agriculture belts • **File** cabinets • **Lockers** • **Metal** shelving • **(23) 3'x2'x3'** concrete blocks • **(8) 4'x2'x2'** concrete blocks



THERE IS A HUGE VOLUME OF SHOP TOOLS & NEW PARTS NOT LISTED! 2 RINGS ALL DAY!



121 Jackson Street, Plain City, OH 43064

Kevin Wendt, CAI - President / Auctioneer / Broker
419.566.1599 | kevin@thewendtgroup.com

Dale Evans - General Manager / Auctioneer
260.894.0458 | dale@thewendtgroup.com

Nathan Whitney - Apprentice Auctioneer

2017
AUCTION OF THE YEAR
838± ACRES - GREENWICH, OH



PREMIER LAND & EQUIPMENT AUCTIONS

Northeast Ohio Lorain County

1,002± Acres

LAND AUCTION - Thursday, March 15, 2018 • 11AM



EQUIPMENT AUCTION
Tuesday, March 20, 2018 • 10AM



Full Details are available at www.thewendtgroup.com

614.626.SOLD