

Important
Shelby County

LAND AUCTION

Friday, Dec. 17
10:30am

297±
Acres

Offered in 5 Tracts

LAND INSPECTION:
WALK-OVER INSPECTIONS ARE
WELCOME ANY TIME.



AUCTION LOCATION: American Legion, 520 E Maple St., Shelbyville, MO 63468

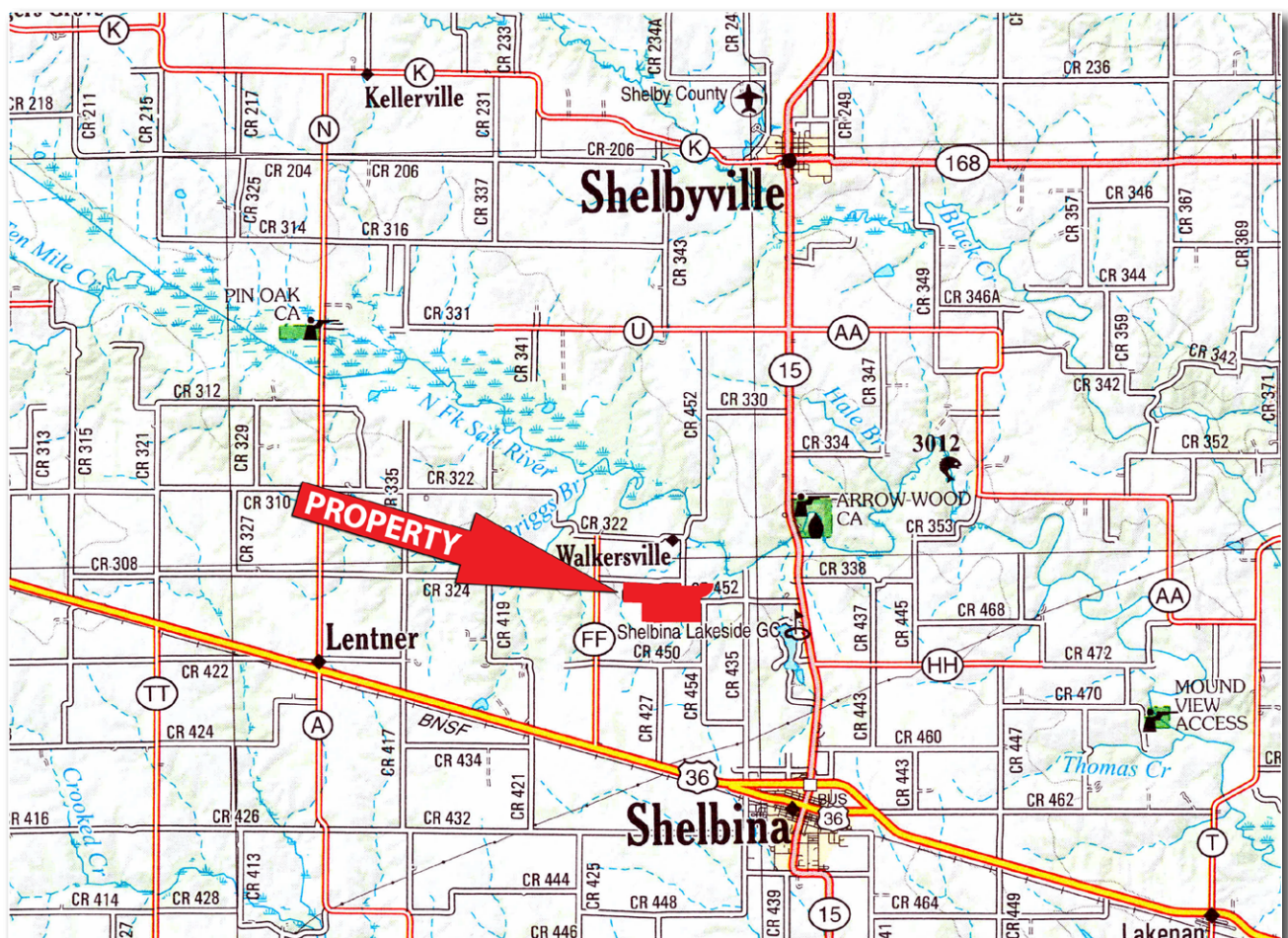
TRACT 1: 113.7± Acres - Mostly tillable, highly productive tract. FSA indicates 92.14 crop acres.

TRACT 2: 21.2± Acres - A nice pasture tillable tract. FSA indicates 19.4 crop acres. This would make a great building site!

TRACT 3: 70.2± Acres - Pasture with small pond and woods. Great hunting

TRACT 4: 40.9± Acres - Excellent recreational piece with mixture of woods, and grassland. Great potential building site!

TRACT 5: 51.4± Acres - Mostly tillable, highly productive tract. FSA indicates 41.08 crop acres.



Call Us to Get Preregistered for Phone Bidding.



Anthony Peoples
660-651-6501

Owner: Jese Pratt

Visit www.peopleslandco.com for Updated Information.