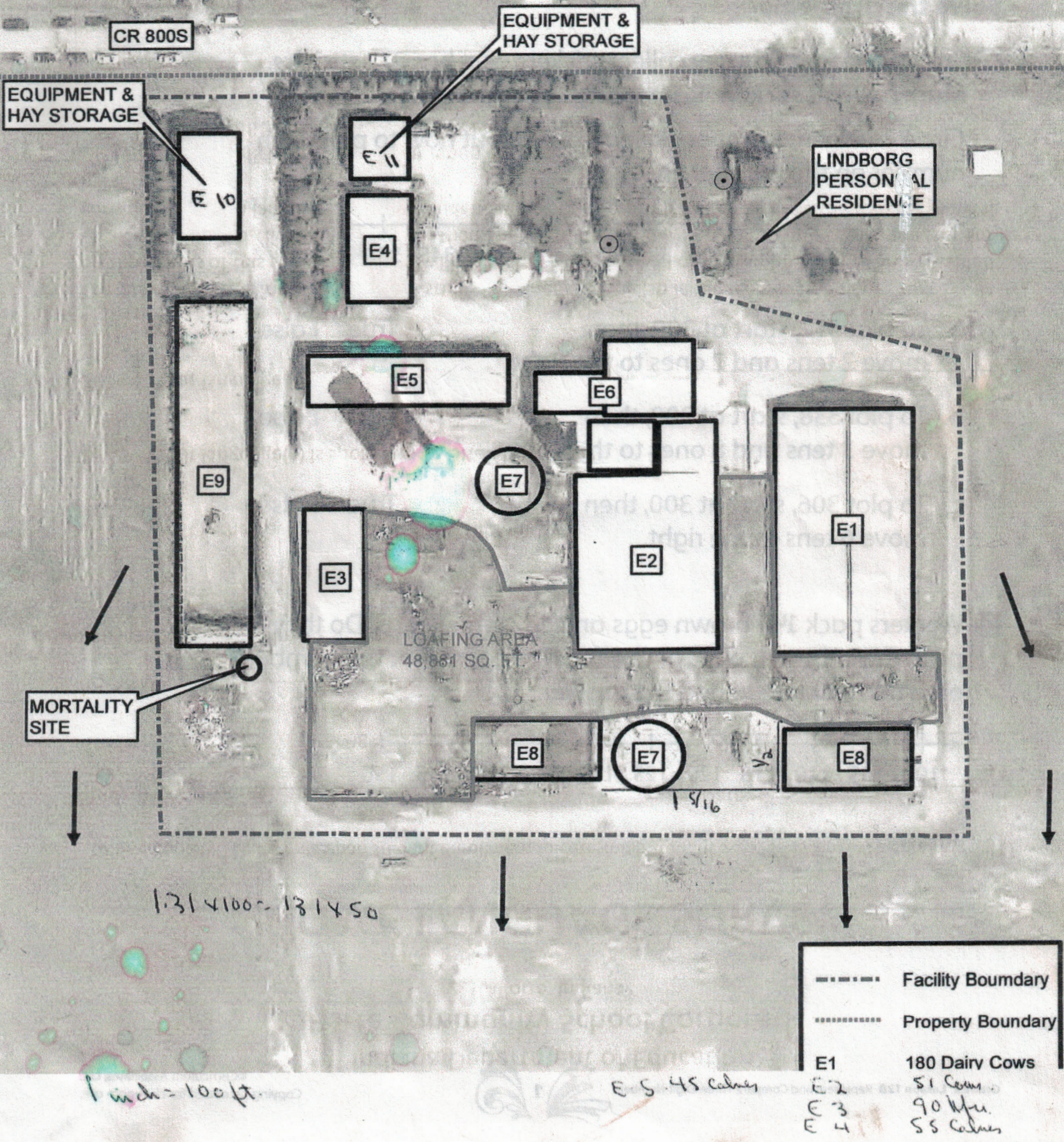


The Lindborg Dairy Facility

3606 W. 800 S., Union Mills, IN 46382



The Lindborg Dairy Facility

3606 W. 800 S., Union Mills, IN 46382

FACILITY DESCRIPTION

E1: 92' x 180' FREESTALL BARN – CENTER DRIVE THROUGH, 168 STALLS. DOC 2000

E2: 98' x 170' BARN – 80 FREESTALLS, 43' x 150' MANURE PACK(FORMER PREFRESH AREA), 40' x 98' INDIVIDUAL CALF BOXES AND TREATMENT AREA. DOC 2006

E3: 40' X 100' HEIFER FREESTALL BARN, 96 FREESTALLS. DOC 2001

E4: 40' X 80' CALVES 2 WEEKS TO 3 MONTHS. DOC 1972

E5: 32' X 150' TWO COMMODITY BAYS, HAY STORAGE, THREE CALF PENS (45 CALVES) DOC 2006

E6: MILKING PARLOR (DOUBLE 10 RAPID EXIT HERRINGBONE), HOLDING PEN, EQUIPMENT ROOM
DOC 2006 - Automatic take-offs, milk meters, 4000 gal bulk tank, crowd gate

E7: TWO CIRCULAR MANURE PITS – 50' X 12' , 23,000 CU.FT CAPACITY

E8 W: OPEN MANURE PIT WITH RAMP – 24,000 CU. FT. CAPACITY

E8 E: OPEN MANURE PIT WITH RAMP – 56,000 CU. FT. CAPACITY

E9: BUNKER SILO – 55' X 260' X 12' (32' OPEN IN CENTER)

E10: HAY STORAGE – 45' X 90' DOC 2012

E11: STORAGE, HAY STRAW, EQUIPMENT – 45'X 45' DOC 1983

Silos – 24X 98 poured concrete with Big Jim unloader formerly used for HMGEC, 18X60 stave silo used for HMGEC, 18X60 stave silo used for CS during bunker refill.

Residence – two story farm house, 4 bedrooms, several remodels (last kitchen 2000), natural gas forced air furnace, wood stove secondary, air conditioning, two car attached garage, vinyl siding and well insulated, new roof 1999, partial rough basement.