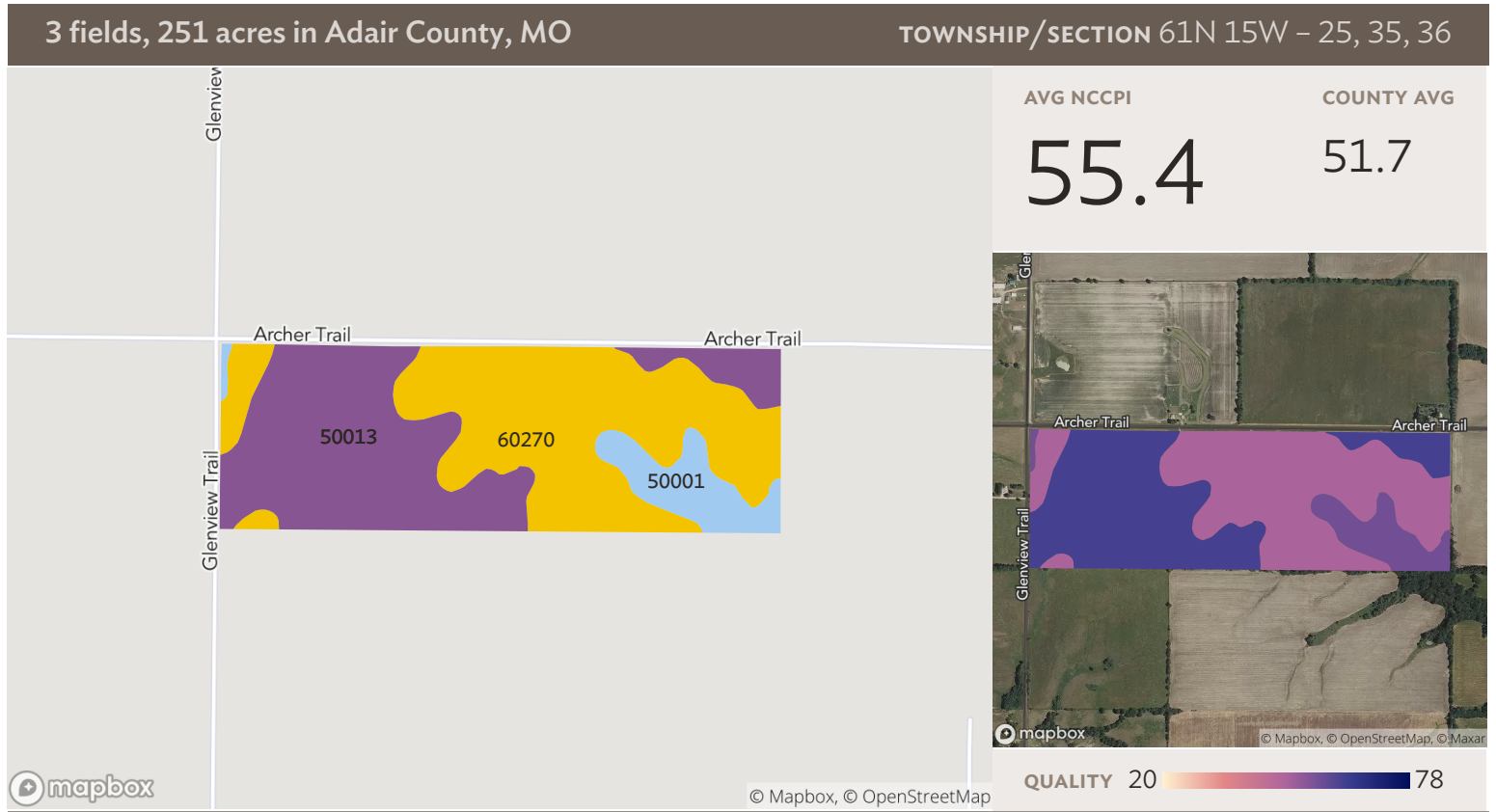


Source: NRCS Soil Survey

## All fields

251 ac

SOIL CODE	SOIL DESCRIPTION	ACRES	PERCENTAGE OF FIELD	SOIL CLASS	NCCPI
60270	Leonard silty clay loam, 2 to 5 percent slopes, eroded	78.90	31.4%	3	49.3
50013	Adco silt loam, 1 to 3 percent slopes	77.19	30.7%	2	62.2
30030	Armstrong clay loam, 9 to 14 percent, slopes, moderately eroded	41.36	16.5%	4	50.8
50001	Armstrong loam, 5 to 9 percent slopes, eroded	31.47	12.5%	3	56.5
50012	Putnam silt loam, 0 to 1 percent slopes	13.50	5.4%	3	57.7
36042	Vesser silt loam, 0 to 2 percent slopes, occasionally flooded	8.33	3.3%	2	91.6
60206	Purdin clay loam, 14 to 20 percent slopes, eroded	0.59	0.2%	4	42.7
<b>251.35</b>					<b>56.2</b>

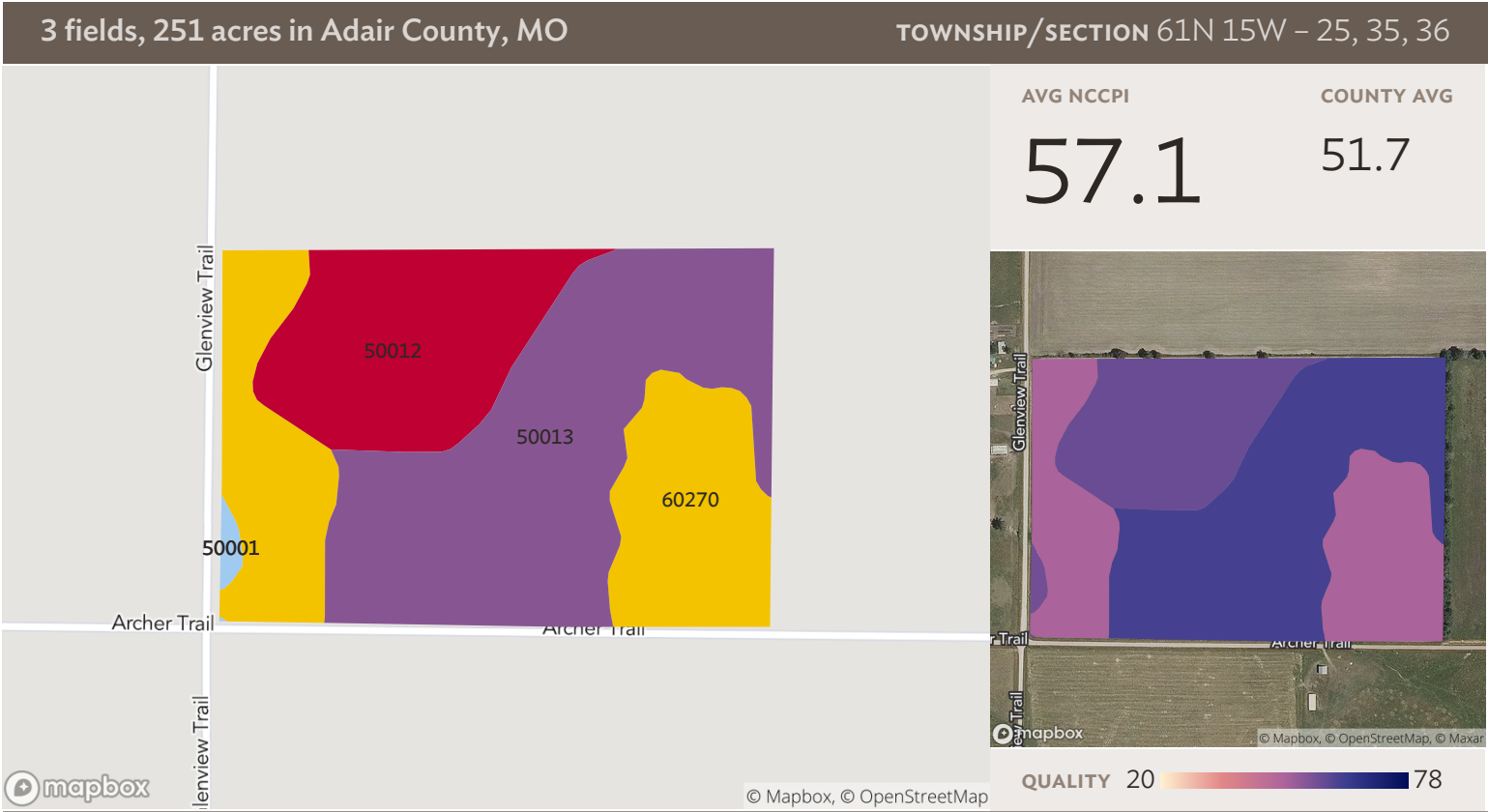


Source: NRCS Soil Survey

## Field 1

116 ac

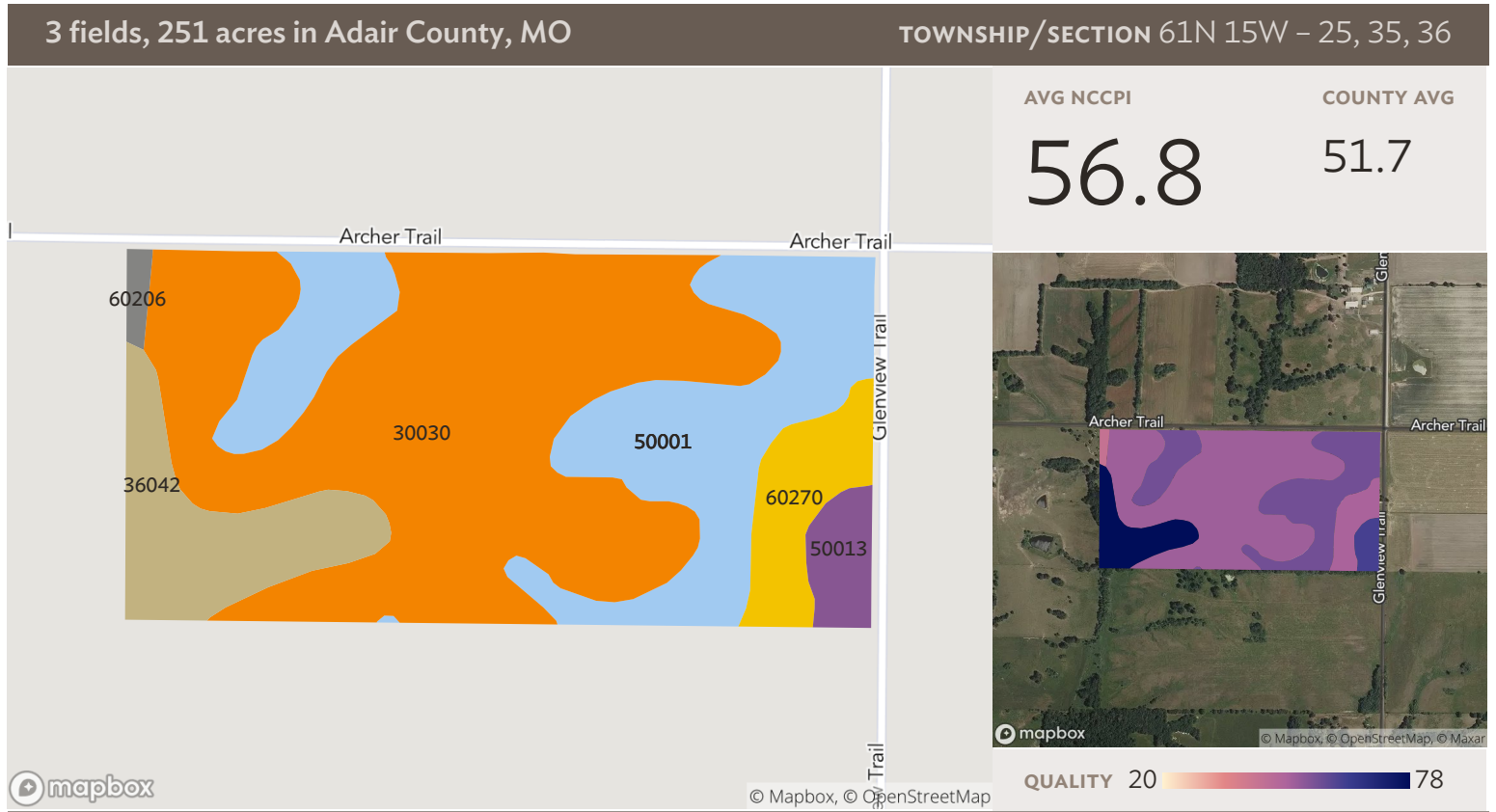
SOIL CODE	SOIL DESCRIPTION	ACRES	PERCENTAGE OF FIELD	SOIL CLASS	NCCPI
60270	Leonard silty clay loam, 2 to 5 percent slopes, eroded	56.05	48.3%	3	49.3
50013	Adco silt loam, 1 to 3 percent slopes	49.13	42.4%	2	62.2
50001	Armstrong loam, 5 to 9 percent slopes, eroded	10.81	9.3%	3	56.5
<b>115.99</b>					<b>55.4</b>



## Field 2

58 ac

SOIL CODE	SOIL DESCRIPTION	ACRES	PERCENTAGE OF FIELD	SOIL CLASS	NCCPI
■ 50013	Adco silt loam, 1 to 3 percent slopes	25.79	44.7%	2	62.2
■ 60270	Leonard silty clay loam, 2 to 5 percent slopes, eroded	18.05	31.3%	3	49.3
■ 50012	Putnam silt loam, 0 to 1 percent slopes	13.50	23.4%	3	57.7
■ 50001	Armstrong loam, 5 to 9 percent slopes, eroded	0.40	0.7%	3	56.5
<b>57.73</b>					<b>57.1</b>



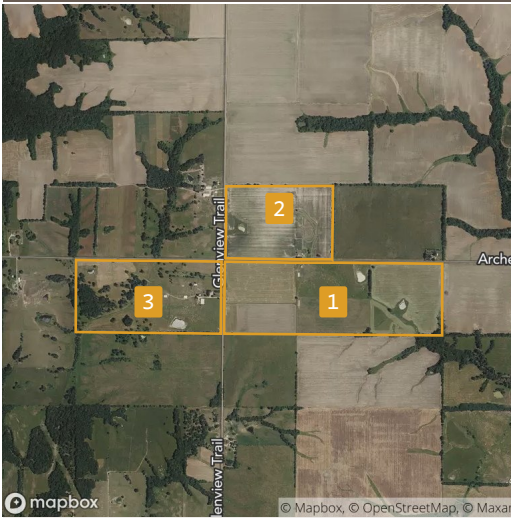
### Field 3

Source: NRCS Soil Survey

78 ac

SOIL CODE	SOIL DESCRIPTION	ACRES	PERCENTAGE OF FIELD	SOIL CLASS	NCCPI
30030	Armstrong clay loam, 9 to 14 percent slopes, moderately eroded	41.36	53.3%	4	50.8
50001	Armstrong loam, 5 to 9 percent slopes, eroded	20.27	26.1%	3	56.5
36042	Vesser silt loam, 0 to 2 percent slopes, occasionally flooded	8.33	10.7%	2	91.6
60270	Leonard silty clay loam, 2 to 5 percent slopes, eroded	4.80	6.2%	3	49.3
50013	Adco silt loam, 1 to 3 percent slopes	2.27	2.9%	2	62.2
60206	Purdin clay loam, 14 to 20 percent slopes, eroded	0.59	0.8%	4	42.7
					<b>77.63</b>
					<b>56.8</b>

3 fields, 251 acres in Adair County, MO TOWNSHIP/SECTION 61N 15W - 25, 35, 36

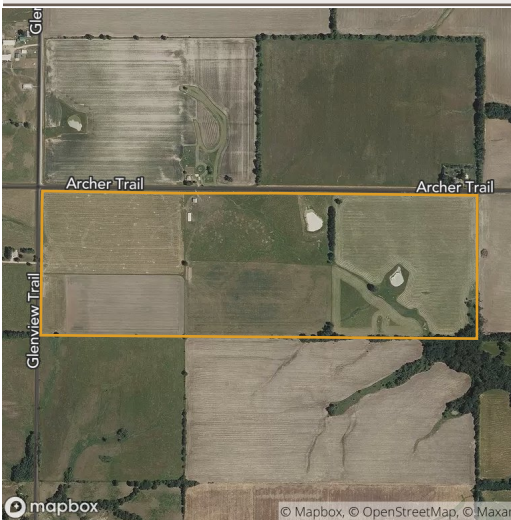


**All fields**

251 ac



	2019	2018	2017	2016	2015
Grass/Pasture	46.3%	52.2%	48.7%	52.3%	59.2%
Soybeans	22.0%	20.4%	40.2%	21.1%	28.8%
Corn	19.4%	17.0%	-	17.1%	1.1%
Forest	8.5%	6.4%	6.3%	5.0%	5.3%
Other	3.7%	4.1%	4.8%	4.5%	5.6%



**Field 1**

116 ac



	2019	2018	2017	2016	2015
Grass/Pasture	48.8%	55.9%	52.4%	55.2%	67.4%
Soybeans	39.7%	4.1%	44.1%	41.5%	27.9%
Corn	5.7%	36.4%	0.1%	0.6%	0.6%
Other	5.8%	3.5%	3.4%	2.8%	4.1%

3 fields, 251 acres in Adair County, MO TOWNSHIP/SECTION 61N 15W - 25, 35, 36

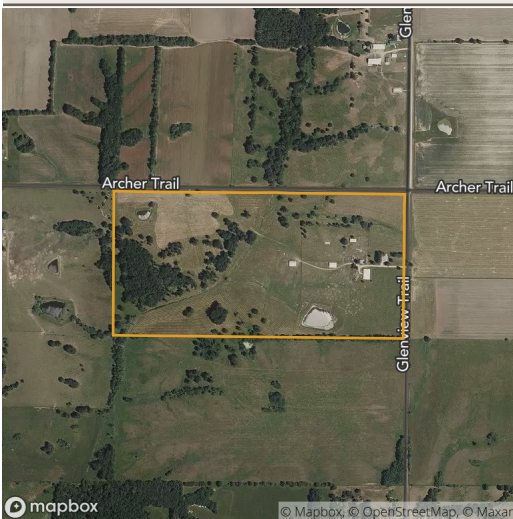


### Field 2

58 ac



	2019	2018	2017	2016	2015
<span style="color: yellow;">■</span> Corn	73.2%	0.8%	-	73.4%	3.3%
<span style="color: green;">■</span> Soybeans	13.9%	76.5%	80.6%	2.9%	63.2%
<span style="color: darkgreen;">■</span> Grass/Pasture	8.6%	12.0%	8.7%	13.0%	19.7%
<span style="color: purple;">■</span> Non-Cropland	2.1%	10.7%	10.7%	10.4%	10.4%
<span style="color: brown;">■</span> Other	2.2%	-	-	0.3%	3.4%



### Field 3

78 ac



	2019	2018	2017	2016	2015
<span style="color: green;">■</span> Grass/Pasture	70.7%	76.5%	72.8%	77.2%	76.2%
<span style="color: darkgreen;">■</span> Forest	24.5%	18.1%	18.8%	14.5%	15.6%
<span style="color: brown;">■</span> Other	4.8%	5.4%	8.4%	8.4%	8.2%

Source: NASS Cropland Data Layer